

pennsylvania
Cancer Coalition

2026

Welcome to the
Pennsylvania
Cancer
Coalition

WELCOME

Thank you for your interest in joining the Pennsylvania Cancer Coalition (PCC). We welcome you to the PCC and look forward to your active involvement. We hope you will become an engaged member by participating in one or more of our Workgroups and Collaboratives, attending our quarterly meetings, and contributing your insight and expertise to reach our State Cancer Plan goals.

As a member, you will receive a bimonthly e-newsletter, letting you know what's new with the PCC and its member organizations. We will inform you of cancer-related events throughout the state, including training opportunities, conferences, and meetings. Legislative happenings will be shared along with ways that you and the people you serve can affect change on a statewide level.

With your help, we can make a difference in Pennsylvania by working together to reduce the burden of cancer.

Your PCC Co-Chairs,

Lyn Robertson

Charnita Zeigler-Johnson

ABOUT THE PCC

The PCC is the official statewide cancer coalition. The PCC is an all-volunteer organization with representation from a wide variety of sectors which include public and private institutions, health systems, academia, government, non-profits, advocacy groups, and residents from across the state.

The PCC is committed to achieving health equity across the cancer continuum by growing and strengthening its membership to include partners and organizations who are trusted members of under-resourced and under-represented populations experiencing the highest incidences of cancer and related disparities.

The PCC co-chairs and workgroup leaders provide organizational structure, facilitate communication among members and guide implementation efforts through the development of annual action plans. Coalition success is dependent on a common agenda, shared goals with measurements, coordination of activities, continuous communication, and leveraged resources.



Vision

Reduce cancer burden for all Pennsylvanians regardless of age, gender, race/ethnicity, and social, economic, and physical determinants of health.

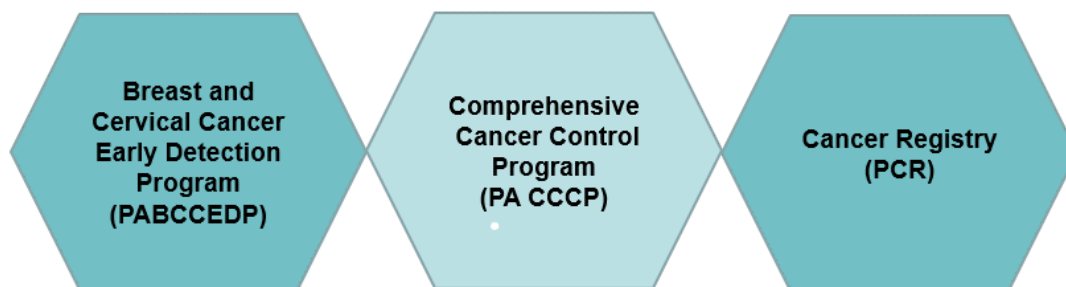
Mission

Through collaboration and collective action, decrease cancer incidence and mortality in Pennsylvania by reducing health disparities and cancer risks, detecting, and treating cancers at an earlier stage and improving the quality of life of survivors.

NATIONAL COMPREHENSIVE CANCER CONTROL PROGRAM (NCCCP)

The Center for Disease Control and Prevention’s [NCCCP](#) provides funds, guidance, and technical assistance to help cancer control coalitions implement effective and sustainable plans to prevent and control cancer.

Centers for Disease Control and Prevention National Comprehensive Cancer Control Program



The three programs work collaboratively to advance health equity, eliminate preventable cancers, ensure all people get the right screening at the right time for the best outcome, and support cancer survivors in a manner that allows them to live longer, healthier lives.

Pennsylvania Department of Health’s Cancer Prevention and Control Collaborative

Comprehensive Cancer Control Program (PA CCCP), the Breast and Cervical Early Detection Program (PABCCEDP) and the Pennsylvania Cancer Registry (PCR)

- **Vision:** Less Cancer, Better Outcomes
- **Mission:** Decrease cancer incidence, morbidity, and mortality by using data to assess the cancer burden and inform program planning and implementation of evidence-based interventions.

The Pennsylvania Comprehensive Cancer Control Program

Establishes statewide goals and implements and evaluates cancer control initiatives to reduce the cancer burden. For more information [Pennsylvania Comprehensive Cancer Control Program \(PACCCP\)](#)

The Pennsylvania Cancer Registry

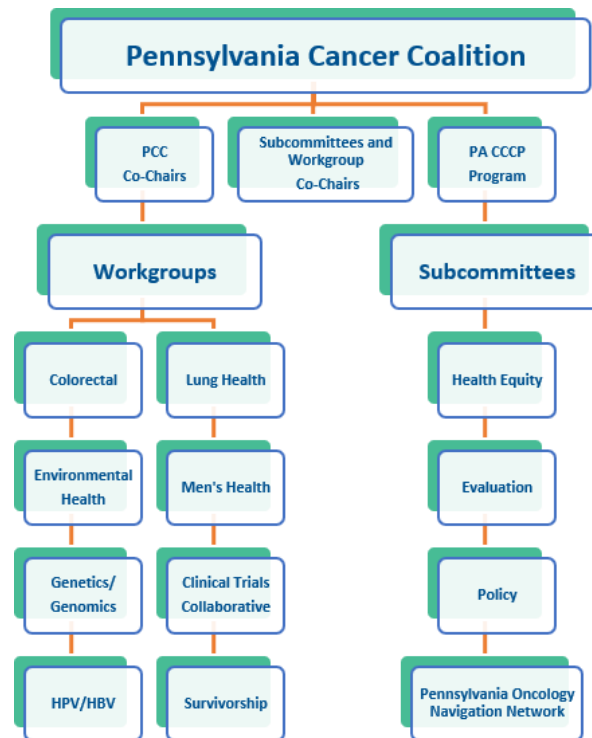
Collects demographic, diagnostic, stage and treatment information on patients diagnosed and treated by health care professionals in the state. For more information [Cancer Registry \(pa.gov\)](#)

The Pennsylvania Breast and Cervical Cancer Early Detection Program

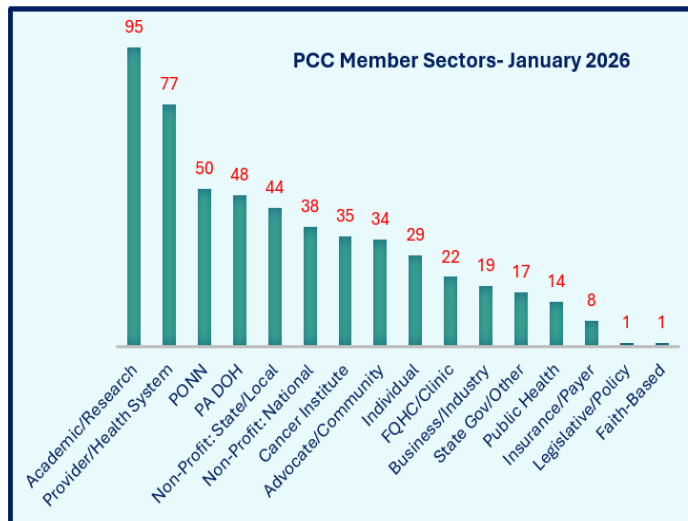
Provides breast and cervical cancer screening services to eligible low-income or uninsured individuals across the state. For more information [PA Breast and Cervical Cancer Early Detection Program](#)

PCC STRUCTURE AND MEMBERSHIP PROFILE

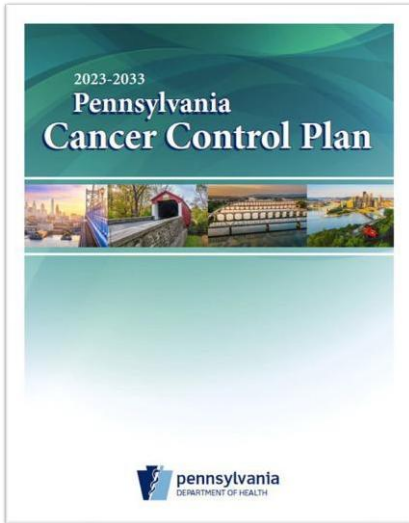
PCC Hierarchal Chart 2026



The chart below shows the distribution of PCC members by sector in 2026



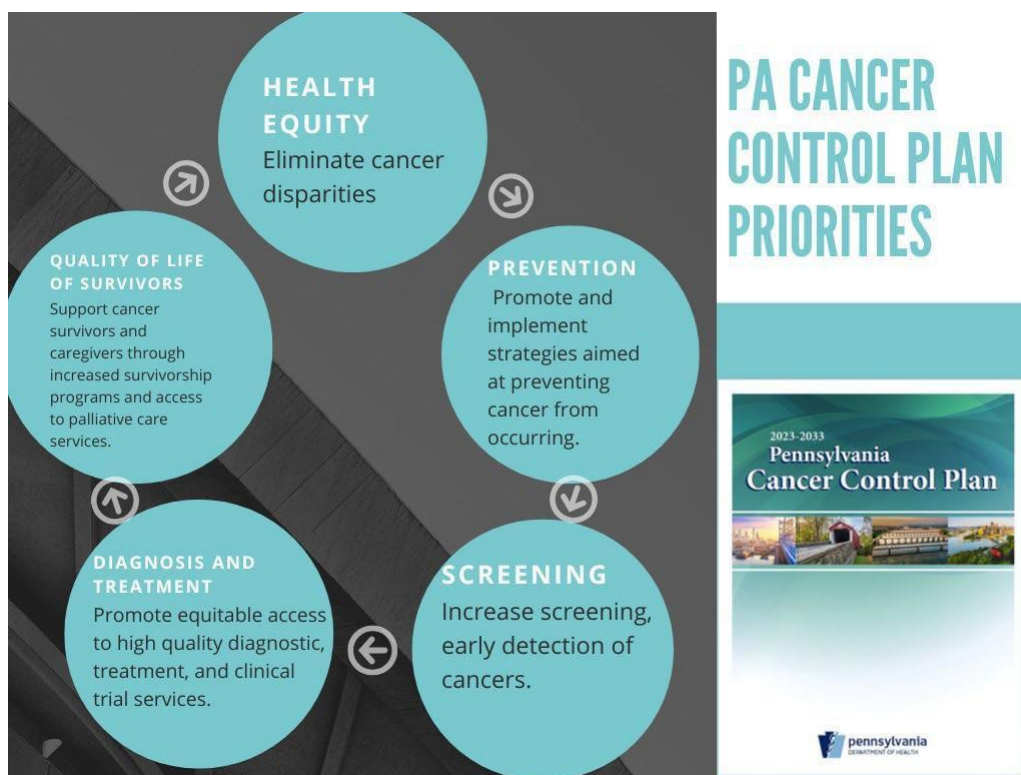
OUR PLAN FOR COMPREHENSIVECANCER CONTROL



[Pennsylvania 2023-2033 Cancer Control Plan](#)

Plan Overview








The Pennsylvania Cancer Control Plan 2023-2033 is the result of ongoing collaboration among individuals and organizations committed to improving the state’s cancer incidence and mortality rates. The Plan was developed using tools and resources from the US Centers for Disease Control and Prevention (CDC) National Comprehensive Cancer Control Program (NCCCP) and with contributions from the PA Department of Health’s Division of Cancer Prevention and Control, Cancer Registry, Health Statistics, and Epidemiology. This document provides an overview of PA’s cancer burden and disparities in cancer. It also establishes cancer control priorities and actions to be taken for cancer prevention, early diagnosis, optimum treatment, and care of survivors.



PLAN IMPLEMENTATION

To guide comprehensive cancer control efforts, the Plan will be widely disseminated to coalition partners, health systems, insurance providers, state government agencies, policy, and legislative groups. The Plan will be publicly available through the PA Department of Health and PCC websites. The PCC will convene implementation teams and workgroups to address the goals; identify lead agencies and organizations to implement evidence-based interventions; and evaluate outcomes.

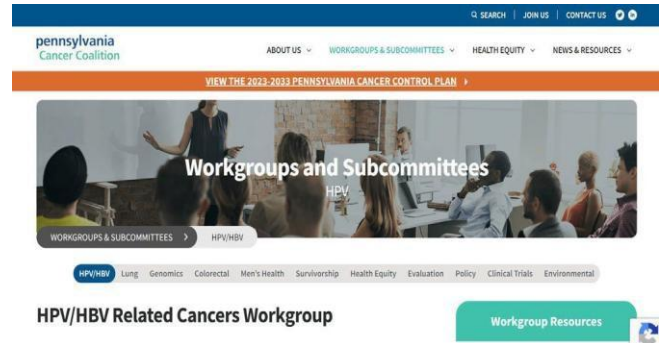
CANCER CONTROL FRAMEWORK

	PARTNERSHIPS	<p>The Pennsylvania Cancer Coalition The National Comprehensive Cancer Control Program:</p> <ul style="list-style-type: none"> • Pennsylvania Comprehensive Cancer Control Program (PACCCP) • Pennsylvania Breast & Cervical Cancer Early Detection Program (PA-BCCEDP) Department of Health Commonwealth of Pennsylvania • Pennsylvania Cancer Registry 	
	QUALITY DATA	<p>PA cancer registry and health statistic data, population, and survey data are collected and analyzed to identify cancer priorities, health disparities, and cancer risk information. Data is used in the development, implementation, and evaluation of the Plan.</p>	
	GOALS	<p>The “big picture” or favorable outcome the PCC wants to achieve related to cancer incidence and mortality.</p>	
	OBJECTIVES	<p>The measurable aims to achieve goals. SMARTIE format: Specific, Measurable, Achievable, Realistic, Time-bound, Inclusive, and Equitable.</p>	
	STRATEGIES	<p>Implementation actions using POLICY, SYSTEMS and ENVIRONMENTAL CHANGE and Evidence-Based Interventions (EBIs).</p>	
		<p>PSE PSE approaches can make healthy living easier and provide sustainable cancer prevention and control improvements where people live, work, play, and learn.</p>	<p>EBIs Science-based methods proven to improve health and prevent disease.</p>
	EQUITY	<p>Health equity is achieved when every person can live their healthiest life, including people in communities with a higher burden of cancer.</p>	
	EVALUATION	<p>Asystematic method for collecting, analyzing, and using data to examine the effectiveness and efficiency of programs and to contribute to continuous program improvement. The Framework for Evaluation in Public Health is used for planning and coalition evaluation.</p>	

COMMUNICATING WITH PCC MEMBERS TO ACHIEVE PLAN GOALS AND OBJECTIVES

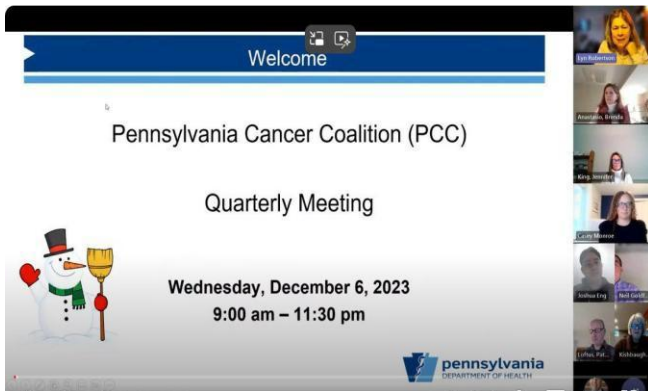
PCC Workgroup Information

Access the [PCC Website](#) where you can find information about the Workgroups and Collaborations. Each workgroup and collaboration have a web page where you can find the mission, Action Plan updates, co-chair information, and archived meeting notes.



Quarterly Member PCC Meetings

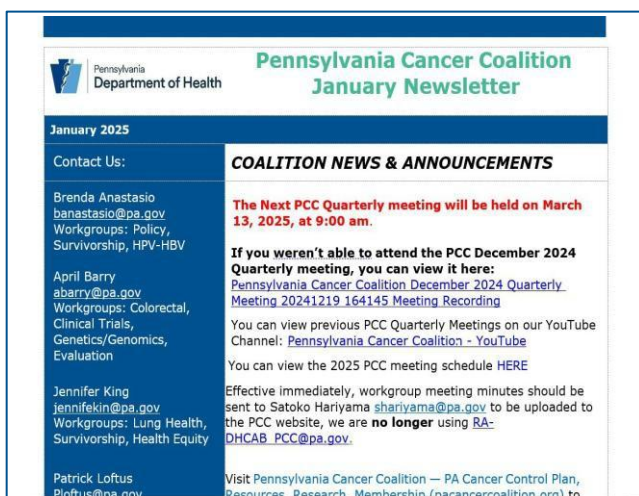
Join us for our quarterly meetings that provide an opportunity for members to share ideas on cancer implementation strategies, report on cancer plan activities, and feature a topic in cancer prevention and control. Meeting attendees will learn about cancer-related activities happening across the state, and receive helpful information, resources, and best practices to reduce the state's cancer burden.



PCC E-Newsletter

A bimonthly e-newsletter created for the coalition related to the State Cancer Plan, including health promotion articles, funding opportunities, and meetings and trainings of interest.

Do you have information to share? Contact jennifekin@pa.gov



THANK YOU!

Thank you for joining us! As a PCC member, you can provide guidance on many of the cancer issues that face Pennsylvania.

For more information

[Contact the Pennsylvania Cancer Coalition](#)

The logo for the Pennsylvania Cancer Coalition is centered in a white rectangular box with a dark blue border. The word "pennsylvania" is written in a dark blue, lowercase, sans-serif font. Below it, the words "Cancer Coalition" are written in a green, lowercase, sans-serif font.

pennsylvania
Cancer Coalition