

Pennsylvania Cancer Coalition (PCC) Health Disparities Meeting

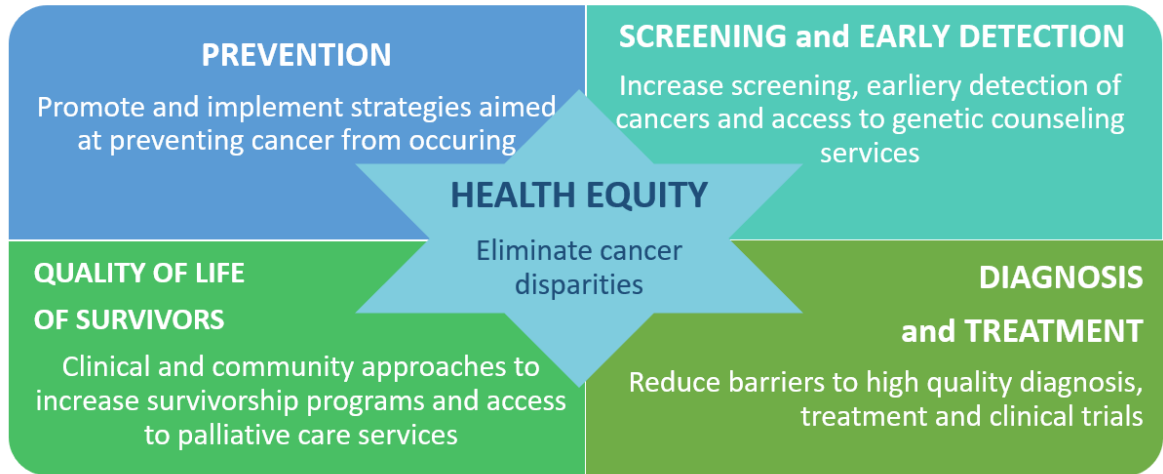
December 13, 2022

- I. **Introductions** of new members:
 - Holly Dolan – Penn State College of Medicine, Office of Health Equity
 - Katie Noss- PA Association of Community Health Centers
 - Kathleen Makala – PA Early Detection Program
- II. **Resources:** PA demographics and Cancer States were provided:
 - [Pennsylvania population by year, county, race, & more | USAFacts](#)
 - [Cancer Statistics \(pa.gov\)](#)
 - [Cancer Dashboard \(pa.gov\)](#)
 - [EDDIE \(About\) \(pa.gov\)](#)
 - [Net-Cancer-Survival \(pa.gov\)](#)
 - [The Cancer Tables \(pa.gov\)](#)
 - [Burden of Cancer in Pennsylvania \(pa.gov\)](#)
- III. **PCC – Health Disparity Goals:** Following the last two PCC working group discussions regarding our role for the PCC, Peg and Evelyn had a call with incoming chair Lynn Robertson and DOH’s Brenda Anastasio. The state shared that the new plan has been drafted and health equity as a foundational component of the plan (see graphic below). The state also shared that policy will also be embedded into each goal. The draft of the plan will be available in January for review by the PCC members.
 - The plan’s domains will include Prevention, Screening, Early Detection, Diagnosis and Treatment and Quality of Life and Survivorship.
 - This will be a 10 year plan, rather than a 5-year plan.

Health Disparities (HD) Team Restructured

During the current PCC plan, the HD team has supported the PADOH effort in the development of fact sheets to communicate the cancer burden of black men in PA. Currently in its final implementation year, the state agreed that building the new infrastructure would be best. Therefore, once the draft is released, you will be asked to review it and provide the state with feedback.

THE 2023-2033 PENNSYLVANIA CANCER CONTROL PRIORITY GOALS



- Once the plan is released for review, you will receive an assessment form to complete. This assessment will enable us to create a matrix with members' expertise/interests that aligns with the domains and goals of the plan.
- Members will be deployed to lead the health disparities/equity component(s) with each domain. Your role will be to ensure that each domain is addressing disparity/equity issues. If an objective is already defined, your role will be to contribute towards the development of a plan/strategy to execute the objective(s). A secondary role will be to report back to the larger HD team and share how we are contributing to the overall plan.
- We have a very large team and not all members are 'engaged'. This new approach will enable us to be more impactful, actively contributing to the implementation of the goals.
- We believe this new structure will allow for more input from the members of this large committee, provide a greater level of autonomy and maximize the teams' expertise and insights.

IV. Other updates:

- Dr. Moni shared an HPV tool kit to support dentist. This kit shares a process for dentists to initiate the HPV conversation at the dental office with kids and parents. Parents and children are educated on the importance of the HPV vaccine and how it helps prevent oropharyngeal cancers.
- After this initial conversation, children are referred to peds for HPV vaccine along with parental consent.
- PDF attached.

- V. **Next meeting – January 10, 2023 meeting is postponed.** Once the PCC Plan is released we will send out an assessment and schedule our next meeting.